

PRINTER DRIVER GUIDE

(CPD3800M Ver. 1.00)

Macintosh, Apple, and Mac OS are trademarks of Apple Computer, Inc.

Adobe, Adobe Photoshop are registered trademarks of Adobe Systems.

The various software packages mentioned in this manual are the registered trademarks of their respective companies.

Refer to the following web site to check the latest version of the printer driver.

<http://www.MitsubishiElectric.co.jp/vcp>

System requirements

Computer	:PowerMacintosh G4, G5, PowerBookG4, iMac, Mac mini
Main storage memory	:512 Mbytes or more
Hard disk	:Empty capacity 512 Mbytes or more
Operating system	:10.3.9 or 10.4.11, 10.5.2*2
USB cable	:Be sure to use a cable 2m or under.

*1 CP3800DW supports the USB 2.0 (Hi-Speed USB) interface.

As USB 2.0 is completely upwardly compatible with USB 1.1, CP3800DW can be connected with a personal computer on which USB1.1 interface is available.

When you use CP3800DW with USB 2.0 (Hi-Speed USB), the personal computer has to support USB 2.0 (Hi-Speed USB).

For the compatibility of the personal computer with USB 2.0 (Hi-Speed USB), ask the manufacturer of the personal computer.

*2 This printer driver supports UniversalBinary.

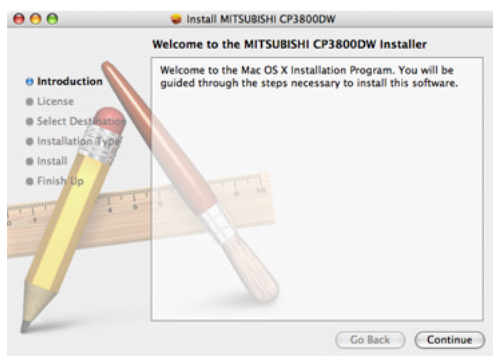
This printer driver is operable either on Intel-based MacOSX or PowerPC-based MacOSX.

Installation

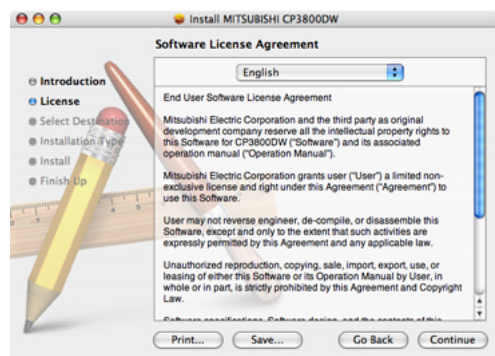
Administrator authority is required to install this printer driver.

(The figures show the menu windows of the operation system ver.10.4.x.)

- 1) Start your Macintosh.
- 2) Double-click on "CP3800MacOSX.pkg" of the folder.
- 3) Click "Continue" button in the "Install MITSUBISHI CP3800DW". (Fig.1)
- 4) Read the Software License Agreement and click "Continue" button. (Fig.2)



<Fig.1>

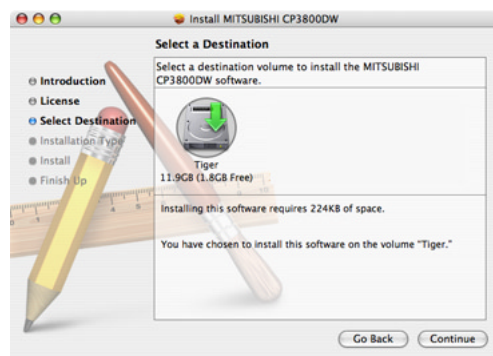


<Fig.2>

- 5) When you agree with the terms and conditions of the Agreement, click “Agree”. (Fig.3)
- 6) Select the destination of the driver and click “Continue” button. (Fig.4)

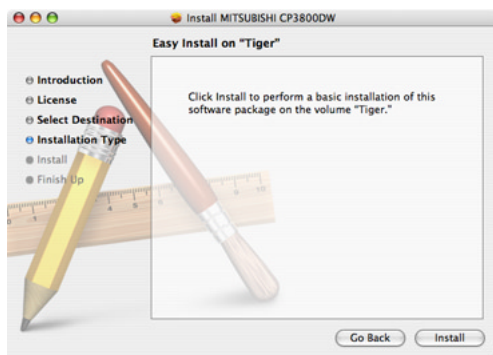


<Fig. 3>

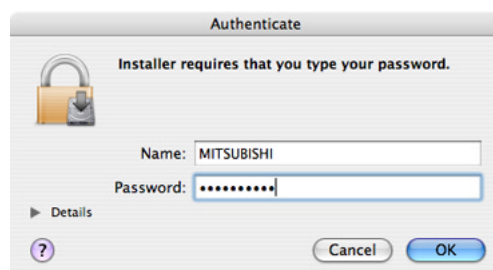


<Fig. 4>

- 7) Click “Install” button.(Fig.5)
- 8) Enter a name and password, and click “OK” button. (Fig.6)



<Fig. 5>

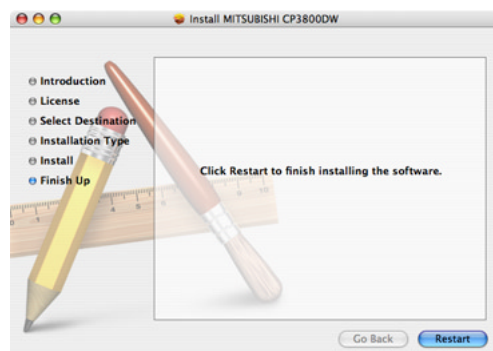


<Fig. 6>

- 9) Click “Continue Installation”. (Fig.7)
- 10)Click “Restart” to restart the personal computer. (Fig.8)

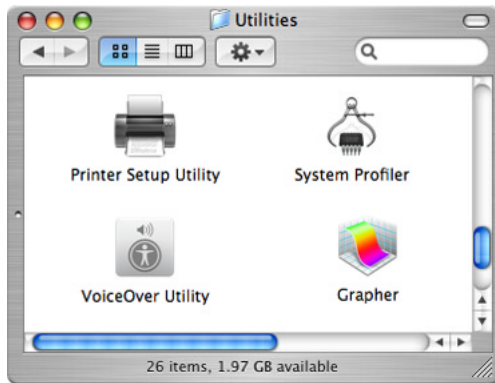


<Fig. 7>

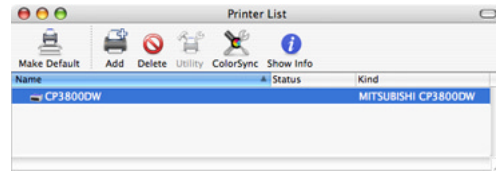


<Fig. 8>

- 11) Turn on the printer and connect it with the personal computer.
- 12) Double-click "Printer Setup Utility" of "Utilities" folder in the "Applications" folder. (Fig. 9)
- When you are using the operation system ver. 10.5, double-click "Print&Fax" of "System Pre Jerens."
- 13) The CP3800DW is automatically added to "Printer List". (Fig. 10)



<Fig.9>



<Fig.10>

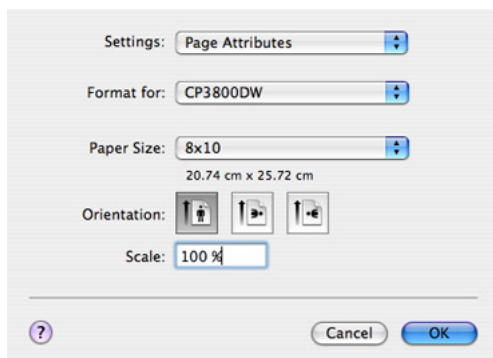
Uninstallation

Operate the following procedures to uninstall the printer driver.

- 1) Start "Terminal".
- 2) When you do not have administrator authority, obtain it by "su" command.
- 3) Go to the directory where the uninstallations script (Rem3800.sh) is stored and execute the script.
./Rem3800.sh
- 4) When a password is required, enter the password for the administrator.
- 5) When uninstallation is completed successfully, the following message is displayed.
Uninstallation was completed.
Is a computer rebooted? (Y/N):
- 6) Enter "Y" or "y" to reboot the computer.
If the computer is not rebooted automatically, exit the ongoing applications and reboot the computer manually.

Function explanation

1. Paper Setting dialog



<Fig.11 Page Setting dialog >

1) Paper Size

The size of paper is selected.

The number of print pixels for each paper size is shown in the table. The number of print pixels varies according to the setting of “1) Resolution” of “2. Print Setting dialog” below.

When you select the paper size for multicut, refer to the image layout in “Operating directions for customer’s purpose.” For the media size for each paper size, see Table 1.

Table 1 (pixels)

Media Size		Multicut	Printer Driver Setting			
8x10	8x12		Paper size		Resolution	
					300dpi	600dpi
S	S	S	(8x4) x2		2448x2502	4896x5004
N	S	S	(8x5) x2	(8x5) x2	2448x3102	4896x6204
N	S	S		(8x6) - (8x4)	2448x3102	4896x6204
N	S	S	(8x6) X2	(8x6) x2	2448x3702	4896x7404
N	S	S		(8x8) - (8x4)	2448x3702	4896x7404
S	S	S	(8x5) - (8x4)		2448x2802	4896x5604
N	S	S	(8x6) - (8x5)		2448x3402	4896x6804
N	S	S	(8x4) x3		2448x3768	4896x7536
S	S	N	8x8		2448x2436	4896x4872
S	S	N	8x10		2448x3036	4896x6072
N	S	N	A4 Length		2448x3544	4896x7088
N	S	N	8x12		2448x3636	4896x7272

S: support, N: Not support

2) Orientation

The direction of paper is set.

This is the standard setting function of the operating system.

3) Scale

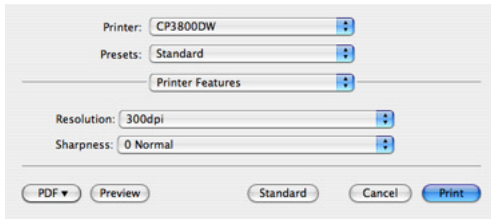
Enlargement scale is set.

(Range : 25-400%)

This is the standard setting function of the operating system.

2. Print Setting dialog

Select "Printer Features" of "Print Setting" dialog to carry out the following settings.



<Fig.12 Print Setting dialog>

1) Resolution

300dpi / 600dpi

The resolution is set.

2) Sharpness

0 Normal / 1 / 2 / 3 / 4 / 5 / 6 / 7 Hard

The value is larger, the outline becomes sharper.

2. Error indication

No.	Error dialog message	Operation
(1)	Cover is opened.	When an error is resolved, printing restarts. The buttons in the error dialogs work as standard operating system. The buttons as follows are displayed.
(2)	Scrap Box is not correctly installed.	
(3)	Paper end.	
(4)	Ink ribbon empty.	Delete Job : Deletes the job during printing.
(5)	Paper jam.	
(6)	Ink ribbon Error.	Stop All Jobs : All the jobs in the spooler, including the jobs during printing become paused.
(7)	Paper size of printer driver and ink ribbon type do not match.	
(8)	Data Error.	Stop Job : Stops the job during printing. When any job is in the spooler, the job starts.
(9)	Something is wrong with the printer.	
(10)	The printer does not respond. Turn the printer Off and then On again, and try again.	
(11)	The ink ribbon is not standard.	

When no error message is displayed on the monitor and printing is not carried out, check the indicators on the front of the printer.

For the indicator on the printer, see the operation manual of CP3800DW.

- 1) Secure of Hard disk for spool file
Secure the capacity of Hard disk for spool file enough for the printer operation and the number of printing sheets.
The printing cannot be correctly carried out when the capacity is running short.
The drive for spool file is the same drive as the system drive usually.
- 2) Operation of the printer
Refer to the operation manual of the printer.
Do not turn off the power switch during data transfer or print.
If you turn off the power switch, restarting of a computer may be needed.
When deletion of a printing data cannot be performed, restarting of a computer is required.
- 3) About connection of a computer and a printer
Do not disconnect the interface cable during data transfer.
If the interface cable is disconnected, connect it after the DATA indicator on the printer stops blinking. If the cable is connected before the DATA indicator stops blinking, the printer driver may not work correctly.
- 4) System requirements for USB interface
Use the computers that are USB-guaranteed by the manufacturer.
CP3800DW supports the USB 2.0 (Hi-Speed USB) interface.
As USB 2.0 is completely upwardly compatible with USB 1.1, CP3800DW can be connected with a personal computer on which USB1.1 interface is available.
When you use CP3800DW with USB 2.0 (Hi-Speed USB), the personal computer has to support USB 2.0 (Hi-Speed USB).
For the compatibility of the personal computer with USB 2.0 (Hi-Speed USB), ask the manufacturer of the personal computer.
- 5) Connection of USB cable
When you take out and insert a USB cable after installation of a printer driver, wait 10 seconds or more after extracting a cable.
If the cable is reinserted without leaving an interval, the printer may not operate normally.
- 6) Print job
Do not delete the print job in the spooler during data transfer. When deleting it, do not start printing until the printer becomes to the initial status.
- 7) Number of prints
In some application, the number of prints set by the printer driver does not work. Set the number of prints from the print dialog box of the application.
- 8) Errors during printing
When an error occurs during printing, it may not be displayed on the monitor. Check the indicator on the front of the printer and take the countermeasure, and then start printing procedure again. For the indication by the indicator of the printer and the countermeasures, see the operation manual of the printer.
- 9) When "Restart" is carried out from the job window without resolving an error after "Job stop" button in the error dialog is clicked, the error dialog may not be displayed. In this case, select "Job stop" to resolve the error, then click "Job start" to start printing.
- 10) "Add" of the "Printer List"
In some version of MacOSX, you may not print images with the printer registered by the "Add" button.
Make the computer recognize the printer by the procedure described in "Installation".
- 11) Color Sync setting
Select the CP38_0100.ICM file attached to the "Current Profile" using the "Devices" setting of "ColorSync Utility."

Operating directions for customer's purpose

Image layout

The image layout for each paper size is shown.

<2-image layout>

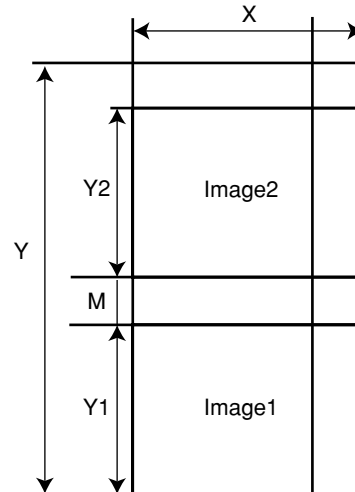
Lay out two images (Image1 and Image2) as shown in the figure.

(pixels)

Resolution	300dpi				
Paper Size	X	Y	Y1	Y2	M
(8x4) x2	2448	2502	1236	1236	30
(8x5) x2	2448	3102	1536	1536	
(8x6) x2	2448	3702	1836	1836	
(8x5) - (8x4)	2448	2802	1536	1236	
(8x6) - (8x4)	2448	3102	1836	1236	
(8x6) - (8x5)	2448	3402	1836	1536	
(8x8) - (8x4)	2448	3702	2436	1236	

(pixels)

Resolution	600dpi				
Paper Size	X	Y	Y1	Y2	M
(8x4) x2	4896	5004	2472	2472	60
(8x5) x2	4896	6204	3072	3072	
(8x6) x2	4896	7404	3672	3672	
(8x5) - (8x4)	4896	5604	3072	2472	
(8x6) - (8x4)	4896	6204	3672	2472	
(8x6) - (8x5)	4896	6804	3672	3072	
(8x8) - (8x4)	4896	7404	4872	2472	



<3-image layout>

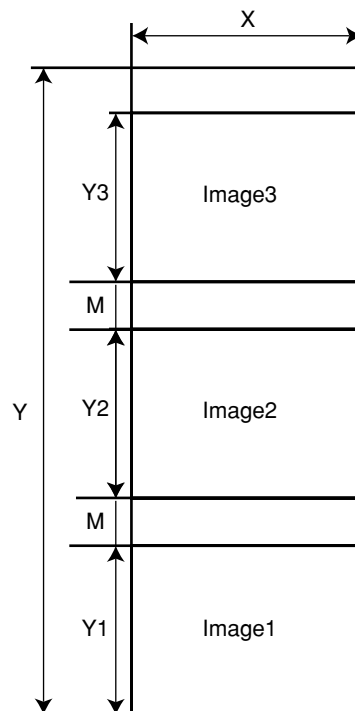
Lay out three images (Image1, Image2 and Image3) as shown in the figure.

(pixels)

Resolution	300dpi					
Paper Size	X	Y	Y1	Y2	Y3	M
(8x4) x3	2448	3768	1236	1236	1236	30

(pixels)

Resolution	600dpi					
Paper Size	X	Y	Y1	Y2	Y3	M
(8x4) x3	4896	7536	2472	2472	2472	60



Prohibition matter

We prohibit Reverse Engineering, decompiling or reverse assembling of this driver software.

Exemption from responsibility

Occasionally, this software does not operate normally depending on operating environment.
Moreover, Mitsubishi Electric Co. will not assume any responsibility for damage (including, but not limited to, lost profit or damage caused from special circumstances etc.) occurring during the use of this driver.